

DETAILS:

Part Number	BM5E41Z11
Casing Material	Painted aluminium
Width [mm]	40
Electrical connections	One cable inlet for M20x1.5 cable gland
IP Degree of Protection	IP66
Actuating Head	Nylon roller lever <input type="checkbox"/> 22
Head Material	Painted aluminium
Microswitch	Snap action contacts (1NO + 1NC)
Approvals	IMQ - cULus - CCC - CSA - EAC
Reference Directives	LVD - 2014/35/EU
Reference Standards	IEC 60947-5-1 / EN 60947-5-1
Operating Temperatures [°C]	-25°C ... +70°C
Stock Temperatures [°C]	-30°C ... +80°C
Protection against electric shocks (according to IEC 60536) [Class]	Class I
Rated Insulating Voltage Ui [V]	500
Pollution Degree	3
Contact rating secondo UL50	A600 - Q600
Rated Impulsive Voltage Uimp [kV]	6
Conventional thermal current in air free Ith (θ min 40 ° C) [A]	10
Short circuit protection (EU min 500Vac - fuses type gG (gI)) [A]	10
Operating currents Ie - AC-15 (50-60 Hz) according to IEC 60947-5-1	24V - 10A / 120V - 6A / 400V - 4A
DC-13 operating currents according to IEC 60947-5-1	24V - 6A / 125V - 0.55A / 250V - 0.4A
Switching Frequency [cycles/hour]	3600
Resistance Between Contacts [mΩ]	25
Connecting Terminals	M3.5 screw with cable clamp (+,-) pozidriv 2
Connecting Cables Dimensions [mm²]	0.75 ... 2.5
Protective Conductor Terminal	M3.5 screw with cable clamp (+,-) pozidriv 2
Marking Terminals	According to IEC 60947-5-1
Mechanical Durability [Millions of Operations]	25
B10d [Millions of Operations]	50

PRODUCT DRAWING RELEASE:

Datasheet creation date: 01/04/2021 10:19

Last Modification (geometry): 25/02/2019 14:37



tel. +39 039 9906408
+39 039 9903468
fax +39 039 9906203

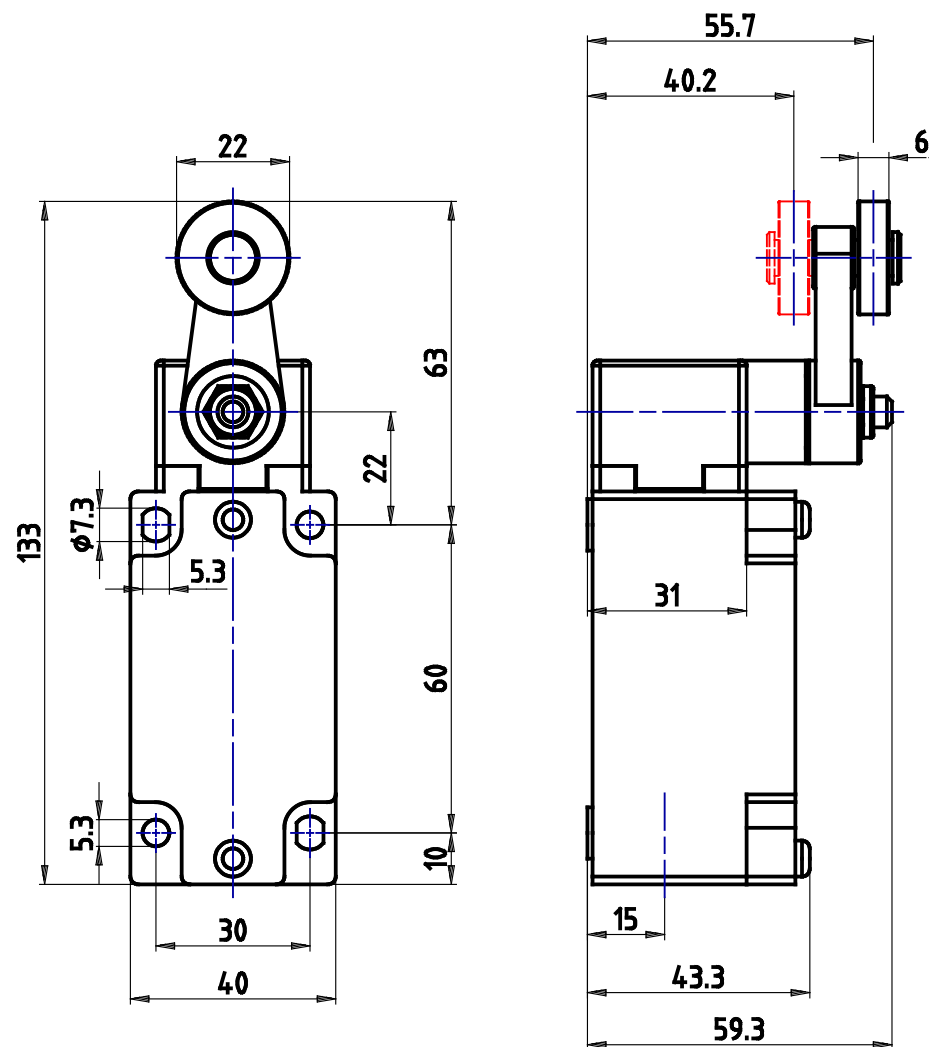


Via Novarino 9/L
23899 Robbiate (LC)
ITALY



www.comepi.it
comepi@comepi.it
tecnico@comepi.it

TECHNICAL VIEW:



Z11		0 20° 33° 46° 76°					
13	21	21-22					▶
14	22	13-14					▶
		21-22					▶
		13-14					▶

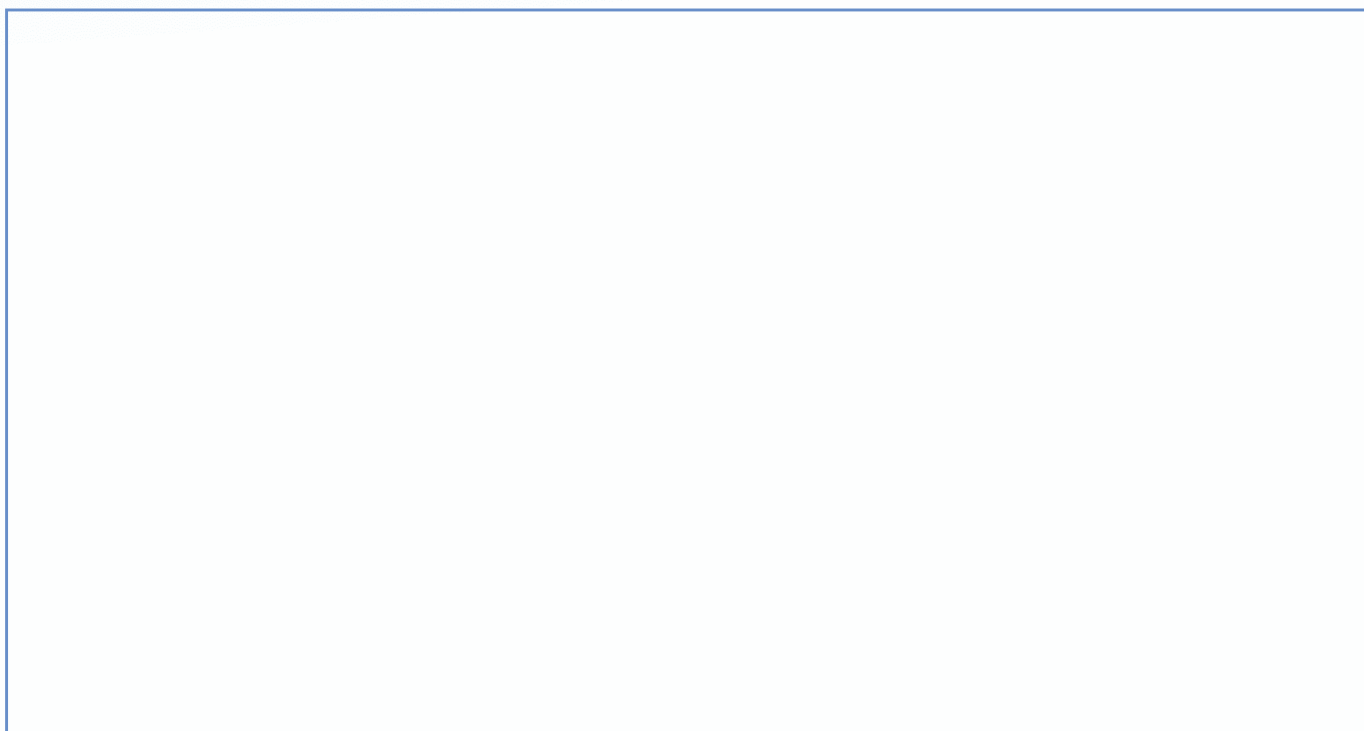
PRODUCT DESCRIPTION:

BM_E41

PRODUCT CODE:

BM5E41Z11

DYNAMIC 3D VIEW:



STATIC 3D VIEW:

